

AIPHONE

JO series

HANDS-FREE
VIDEO INTERCOM
7-INCH TOUCH SCREEN



J0 Series with smartphone connectivity. Enhanced convenience and security for



JO-1MDW

- Easy operation by 7-inch touch screen
- Total hands-free communication
- Zoom and wide screen

7inch touch
LCD screen

Video Recording

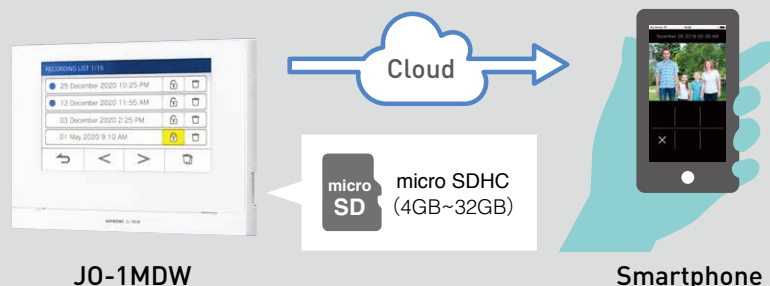
Record visitors even when not able to answer calls. View the recordings from the master station or your smartphone.

Video memory

- Internal memory : 10 calls(max)
- SD card : 1,000 calls(max)

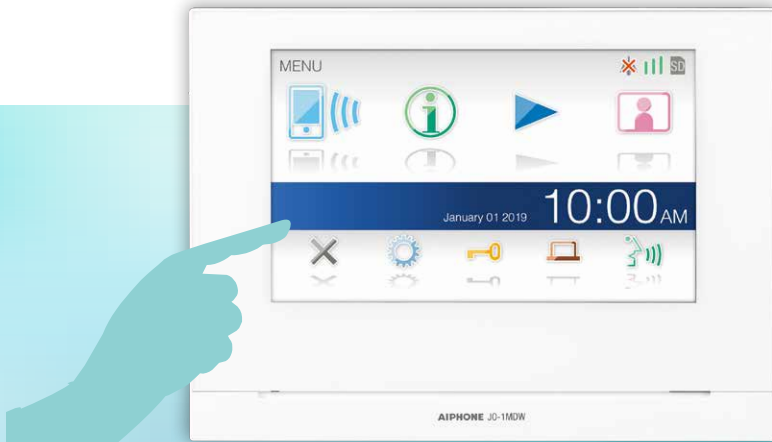


View recorded calls anywhere



your home and office.

1 × 2 × 8
Door Room Smartphone



Touch screen operation



Smartphone connection

Control whether calls are forwarded to mobile devices.



Notifications

Confirm system updates and other important notifications.



Play

Play and manage call recordings.



Monitor

Monitor your door.



Settings

Manage system settings.



Door release

Operate the electric lock connected to the master station.



Option output

Control external devices connected to the master station.



Talk

Communicate with the door station.

Door Station Options

Select from 3 different styles. All options can handle tough weather conditions.



JO-DA



... Dust and moisture resistant



... Nighttime LED



JO-DV



... Dust and moisture resistant



... Ruggedized against vandalism



... ZINC material



... Nighttime LED



JO-DVF



... Dust and moisture resistant



... Ruggedized against vandalism

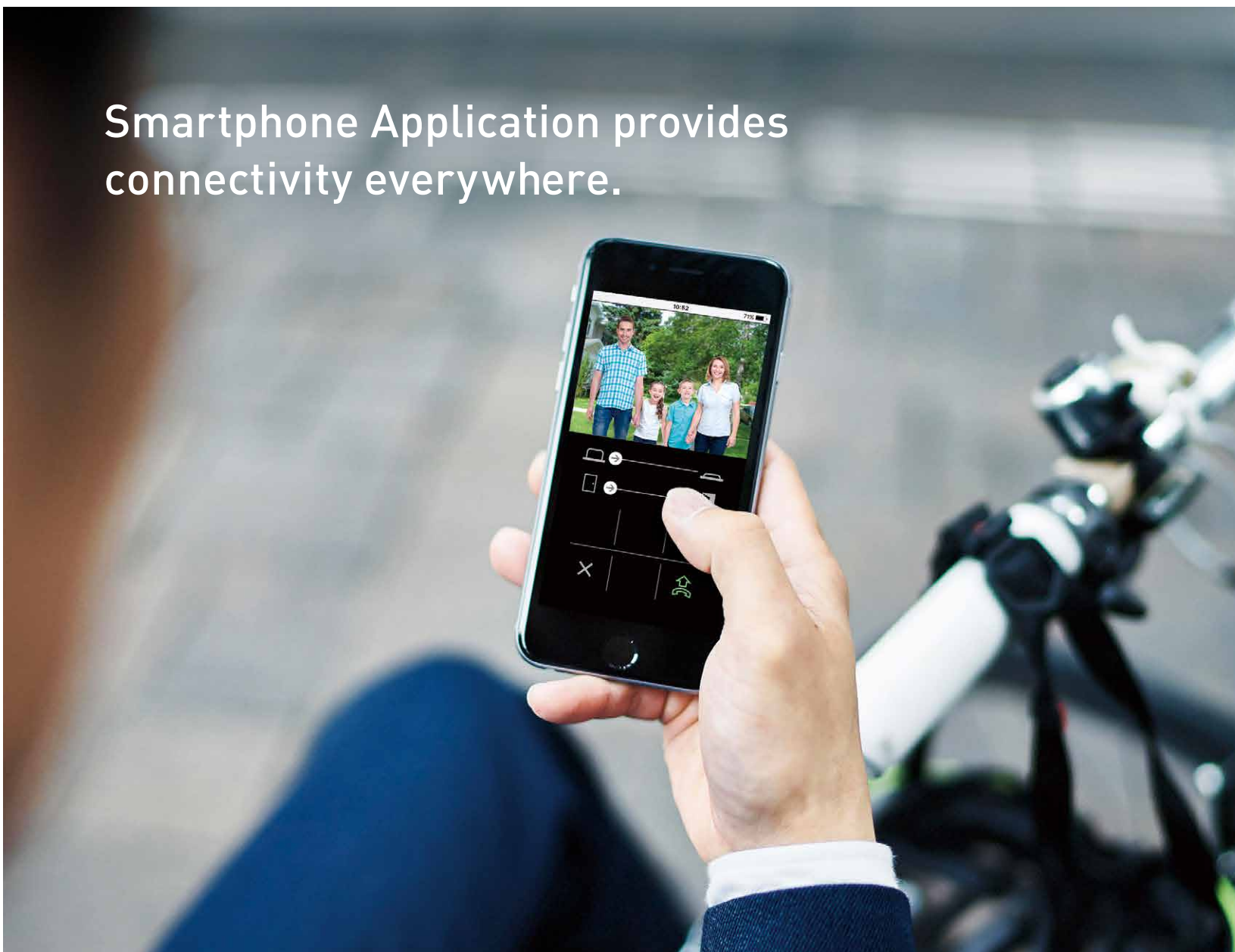


... STAINLESS STEEL material



... Nighttime LED

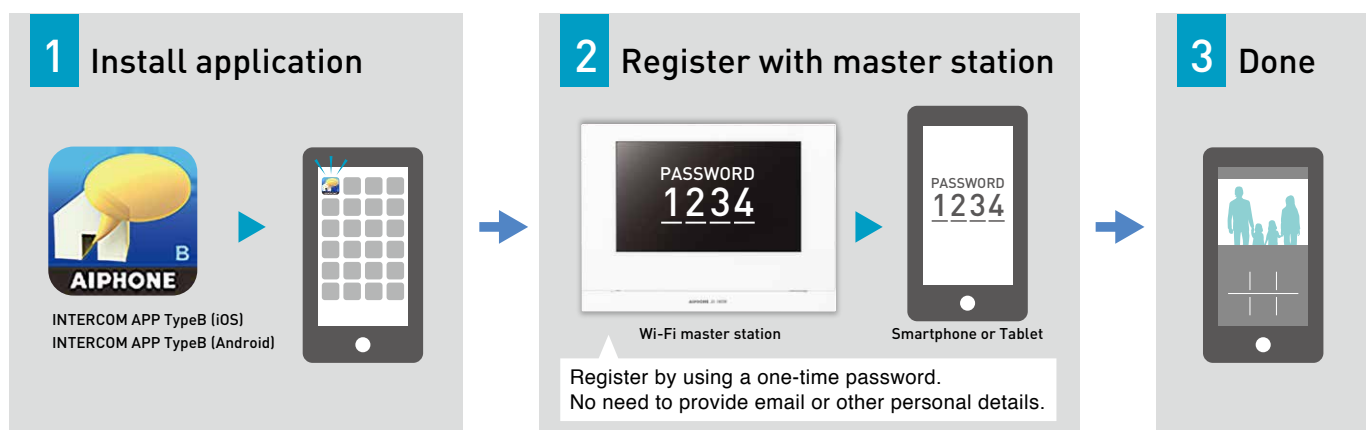
Smartphone Application provides connectivity everywhere.



Have the functionality of the master station in your pocket

- Answer calls from the door station.
- Monitor the door station.
- Operate electric locks while answering a call.
- Control external devices while answering a call.
- Switch between speakerphone mode and telephone mode as necessary.
- Zoom in and zoom out functions.

Connect your smartphone in 3 simple steps

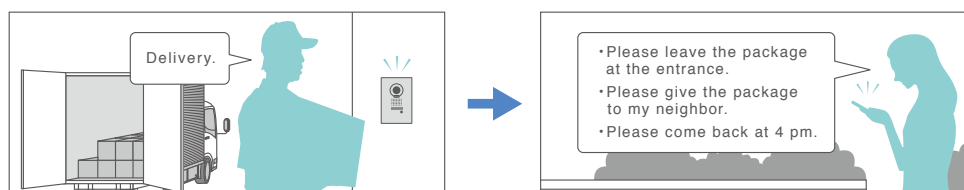


Usage Example

Answer calls anywhere inside or outside your home



Handle deliveries when not at home



Open your door from anywhere

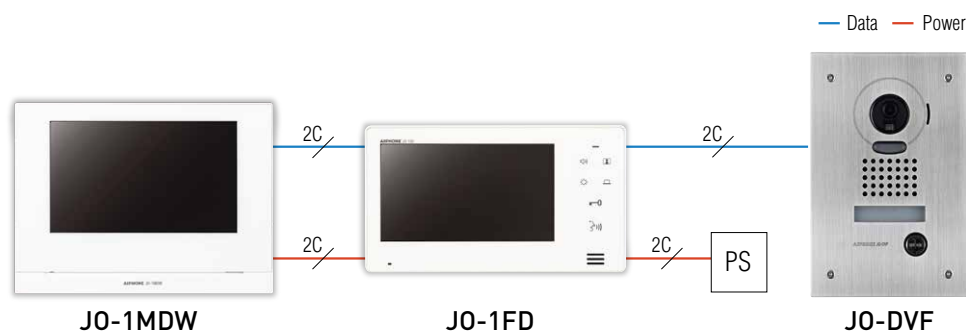


Notes

- Connect your JO-1MDW master station to a commercially available Wi-Fi router that is connected to the Internet.
- Ensure that you install the master station near your Wi-Fi router and that the wireless connection is not obstructed.
- Ensure that your internet connection for both the master station and your mobile device meets the minimum requirements for using the application (1.3MBs for download and 1.3MBs for upload).
- The application cannot be used for emergency calls or communication.
- All internet connection fees and data usage fees are the responsibility of the user.
- Up to 8 mobile devices can be registered to one master station.

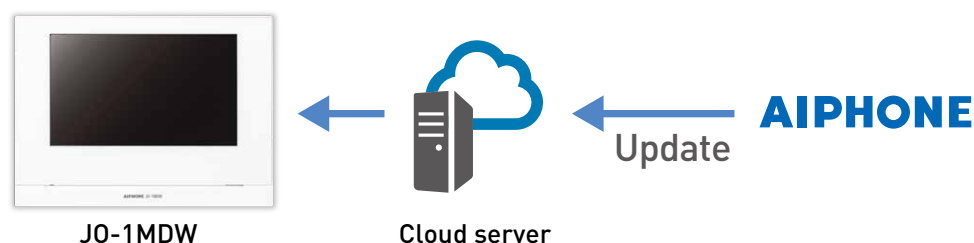
Simple installation

Connect all units in the system with just 2 wires.

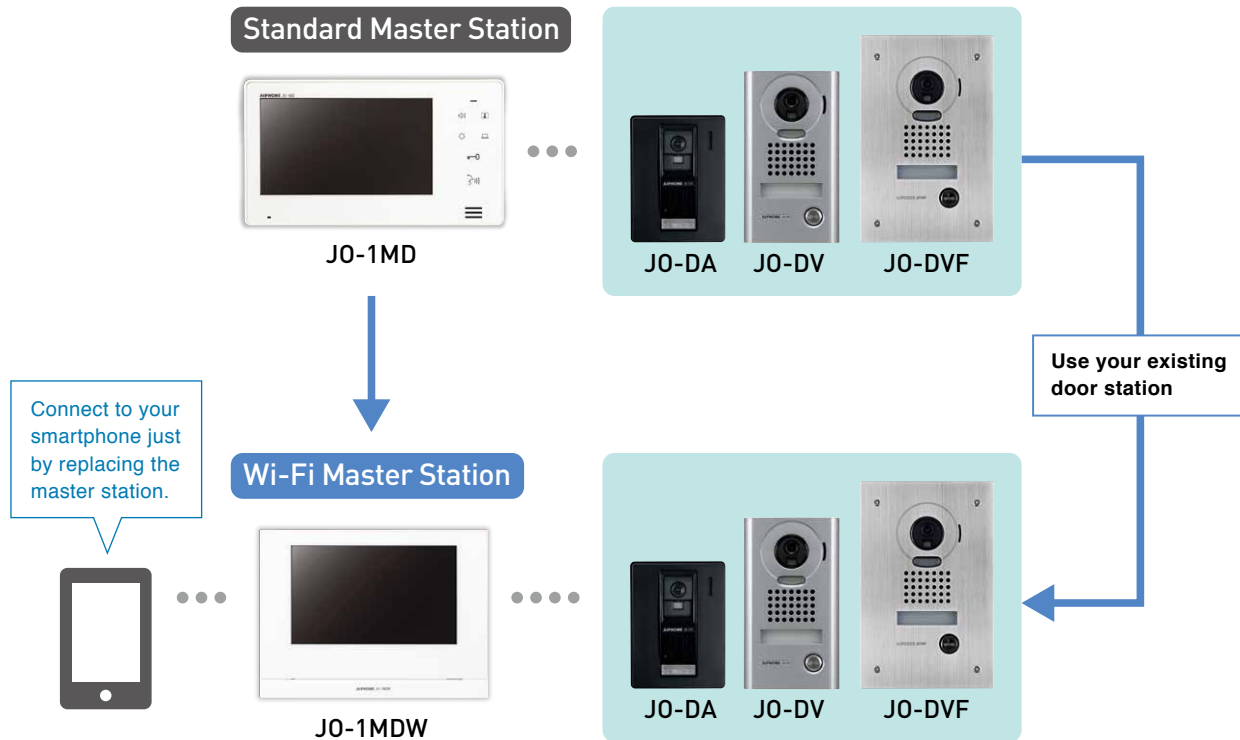


Automatic updates

Automatic updates ensure you always have the latest functionality and security.

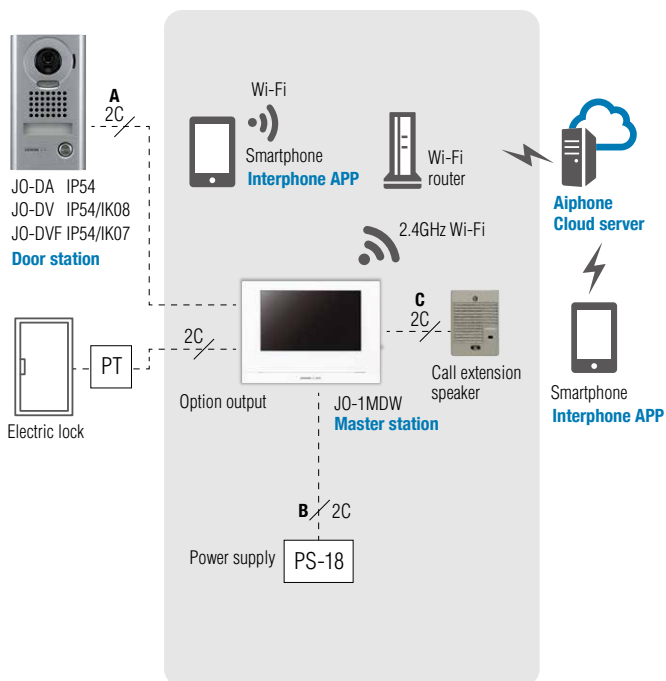


Compatible with existing JO series.

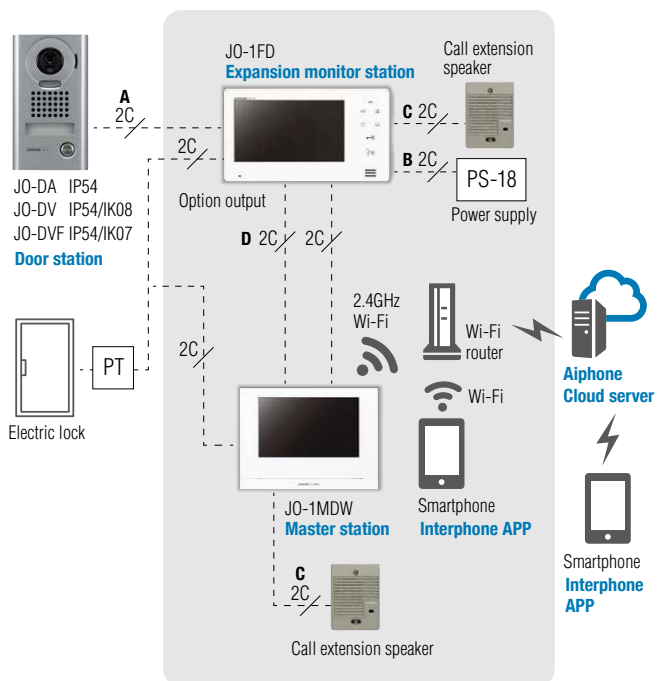


System Configuration

• Installations Using a Single Room Station



• Installations Using Two Room Stations



	φ 0.65mm	22 AWG	φ 0.8-1.2mm	20-16 AWG
A	50m	165'	100m	330'
B	5m	16'	10m	33'
C	50m	165'	150m	490'
D	50m	165'	100m	330'

PS18:PS-1820,PS-1820S,PS-1820UL,PS-1820BF

Wi-Fi Master Station

Master station



JO-1MDW

Boxed sets



JOS-1AW: JO-1MDW, JO-DA
 JOS-1VW: JO-1MDW, JO-DV
 JOS-1FW: JO-1MDW, JO-DVF

Standard Master Station

Master station



JO-1MD

Boxed sets



JOS-1A: JO-1MD, JO-DA
 JOS-1V: JO-1MD, JO-DV
 JOS-1F: JO-1MD, JO-DVF

Door station



JO-DA



JO-DV



JO-DVF

Expansion monitor station



JO-1FD

Specifications

JO-1MDW

Power source	18V DC, Supplied from a power supply
Current consumption	450mA(max.) 80mA(standby.)
Video monitor	7" TFT LCD touch screen
Resolution	800×480 (approx.384,000 pixels)
Type of communication	Open voice hands-free auto-voice actuation or Touch-to-talk communication
Ambient temperature	0~40°C
Wireless LAN interface	IEEE802.11b/g/n
Video memory	Internal memory: 10 calls(max.) (10 seconds/call) SD card: 1,000 calls(max.)(10 seconds/call)
Protect video	Internal memory: 5 calls(max.) micro SDHC card: 100 calls(max.)
SD card	micro SDHC card: 4GB-32GB
Door release contact	24V AC/DC, 1A (N/O dry closure contact)
Option button output	24V AC/DC, 1A (N/O dry closure contact)
Mounting	Surface wall mount
Material	Unit case: Self-extinguishing PC + ABS resin Surface panel: Glass
Weight	Approx.620g

JO-1MD

Power source	18V DC, Supplied from a power supply
Power consumption	410mA(max.) 24mA(standby.)
Video monitor	7 inch TFT color LCD
Pixels	300,000 pixels (approx.)
Type of communication	Open voice hands-free auto-voice actuation or Press-to-talk communication
Ambient temperature	0~40°C
Door release contact	24V AC/DC, 0.5A (N/O dry closure contact)
Option button output	24V AC/DC, 0.5A (N/O dry closure contact)
Mounting	Surface wall mount
Electrical box	3-gang box
Material	Unit case: Self-extinguishing ABS resin Surface panel: Polycarbonate
Weight	Approx.470g

JO-1FD

Power source	18V DC, Supplied from a power supply
Power consumption	420mA(max.) 38mA(standby.)
Video monitor	7 inch TFT color LCD
Pixels	300,000 pixels (approx.)
Type of communication	Open voice hands-free auto-voice actuation or Press-to-talk communication
Ambient temperature	0~40°C
Door release contact	24V AC/DC, 0.5A (N/O dry closure contact)
Option button output	24V AC/DC, 0.5A (N/O dry closure contact)
Mounting	Surface wall mount
Electrical box	3-gang box
Material	Unit case: Self-extinguishing ABS resin Surface panel: Polycarbonate
Weight	Approx.480g

JO-DA

Power source	Supplied from Master monitor station or Expansion monitor station
Type of communication	Open voice hands-free communication
Camera	1/4 inch color CMOS
Ambient temperature	-20~+60°C
Mounting	Surface wall mount (Directly to wall or electrical box)
Electrical box	Single-gang box
Material	Self-extinguishing PC + ABS plastic
Weight	Approx.200g
IP rating	IP54

JO-DV

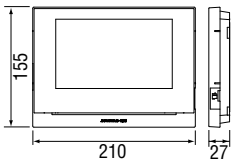
Power source	Supplied from Master monitor station, Expansion monitor station, or Guard station
Type of communication	Open voice hands-free communication
Camera	1/4 inch color CMOS
Ambient temperature	-20~+60°C (-4~+140°F)
Mounting	Surface wall mount (Directly to wall or electrical box)
Electrical box	Single-gang box
Material	Front panel: Zinc die cast. Main unit: Self-extinguishing PC + ABS resin
Weight	Approx.650g
IP rating	IP54
IK rating	IK08

JO-DVF

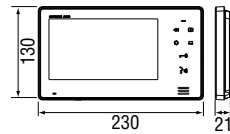
Power source	Supplied from Master monitor station or Expansion monitor station
Type of communication	Open voice hands-free communication
Camera	1/4 inch color CMOS
Ambient temperature	-20~+60°C
Mounting	Flush mount
Electrical box	Not used(Mounts on built-in back box)
Material	Front panel: Stainless steel. Main unit: Self-extinguishing PC + ABS resin
Weight	Approx.580g
IP rating	IP54
IK rating	IK07

Unit Dimensions

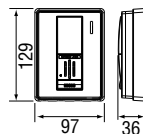
JO-1MDW



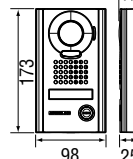
JO-1MD, JO-1FD



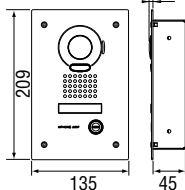
JO-DA



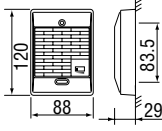
JO-DV



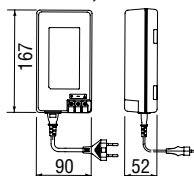
JO-DVF



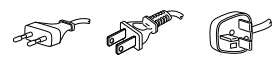
IER-2



PS-1820S, PS-1820UL, PS-1820BF, PS-1820*



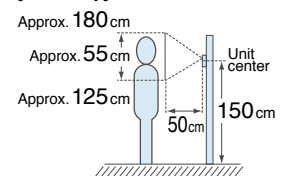
Type of plug
 PS-1820S PS-1820UL PS-1820BF



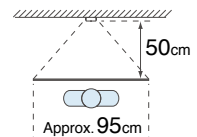
* AC cord & plug is not included with PS-1820.

Mounting positions and image view area

[Vertically]



[Horizontally]



JO series

HANDS-FREE
VIDEO INTERCOM
7-INCH TOUCH SCREEN

Distributed by :



Deming Medal



JQA-0291
Corresponding product:
Standard product
Order product
AIPHONE CO.,LTD.



JQA-EM0453
HEADQUARTERS
TOYOTA FACTORY
TAIHOH SITE
DEVELOPMENT CENTER
AIPHONE CO.,LTD.

AIPHONE[®]
Providing Peace of Mind

AIPHONE PTY LTD
Unit 11A, 2 Eden Park Drive
Macquarie Park, NSW 2113
Australia
Tel.: +61 2-8036-4507
URL: aiphone.com.au

Printed in Australia (E)
MB61066AHZ

JO(E)1811A

All rights reserved. All statements valid at time of printing. The design and specifications are subject to change without notice for improvement.